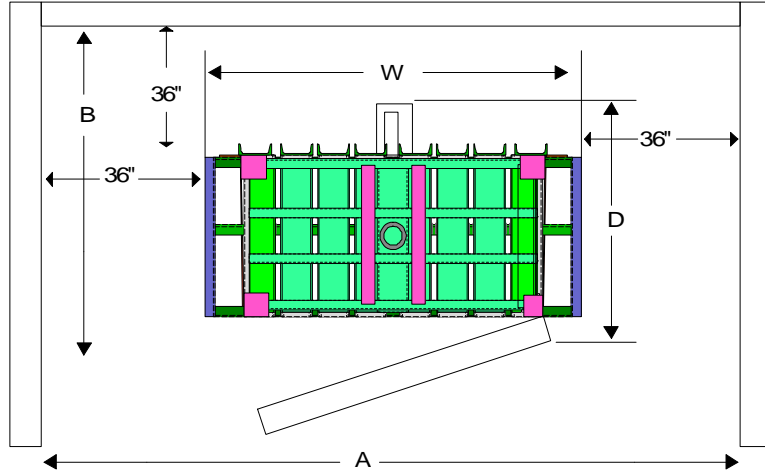




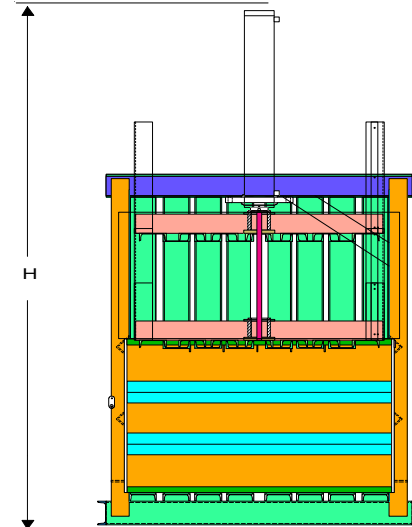
Automation Recycling Services, LLC  
 4600 Hanger Access Rd. / Darlington, SC 29540  
 843-395-6655 Phone / 843-393-0605 Fax  
 automationrd@aol.com

Model	Description	Size Bale	Cylinder Force Diam / Plat Force	Avg Bale Weight	Size ("") W x D x H	Footprint A x B x C Feet (') Inches ("")	List Price Each
S10-60-6	Standard Baler	60 x 30 x 48	6" Cyl - 56,541	700 – 900	72.5 x 40 x 138	12' x 6.5' x 8' 144" x 78" x 96"	\$8,000
LP10-60-6	Low Profile Baler (when ceiling height is a problem)	60 x 30 x 48	6" Cyl - 56,541	700 – 900	72.5 x 40 x 119	12' x 6.5' x 8' 144" x 78" x 96"	\$8,000
LS10-60-6	Long Stroke (higher density for plastic and film)	60 x 30 x 48	6" Cyl - 56,541	700 – 900	72.5 x 40 x 155	12' x 6.5' x 8' 144" x 78" x 96"	\$8,800
S10-72-6	Wide Baler (for larger material)	72 x 30 x 48	6" Cyl - 56,541	800 – 1000	84.5 x 40 x 138	13' x 6.5' x 8' 156" x 78" x 96"	\$9,150
S2-30-4	Small Baler 110volt unit for low volume generator and smaller bales for customers without a forklift	30 x 24 x 18	4" Cyl – 25,130	40 – 300 Dependant upon height of bale	42 x 39 x 110.5	9.5' x 6.5' x 10' 114" x 78" x 119"	\$3,700
SLS10-60-8	Export / Tube / Film Baler	60 x 30 x 48	8" Cyl – 100,518	1100 – 1250	72.5 x 40 x 157	12' x 6.5' x 8' 144" x 78" x 96"	\$14,000
Piggy Back /SD	Piggy-Back Small Baler	30 x 24 x 18	4" Cyl – 25,130	40 – 300 Dependant upon height of bale	Add to Width  45"	Add to Width 4' 45" C = 10' (119")	Add 2,800

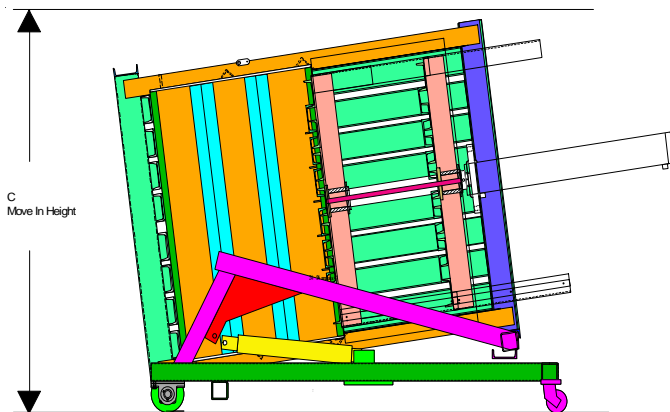
With special provisions, the move in height may be less.



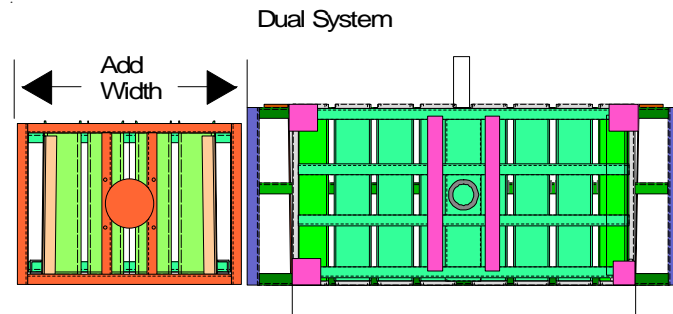
Normal installation footprint.



Normal installation ceiling Height. Note: Power enters top left side of baler



Move in Height. Note, This is the door clearance Required to move the baler.



Dual Baler Installation. Add the width of a piggy-back small baler to the Width of the main baler.